

# Transforming What America Plays On



POURED-IN-PLACE | TILE | SYNTHETIC TURF



**SURFACEAMERICA®**

*Resilient Surfacing for Play, Recreation & Sports*

# YOUR OUTDOOR SURFACING SPECIALISTS



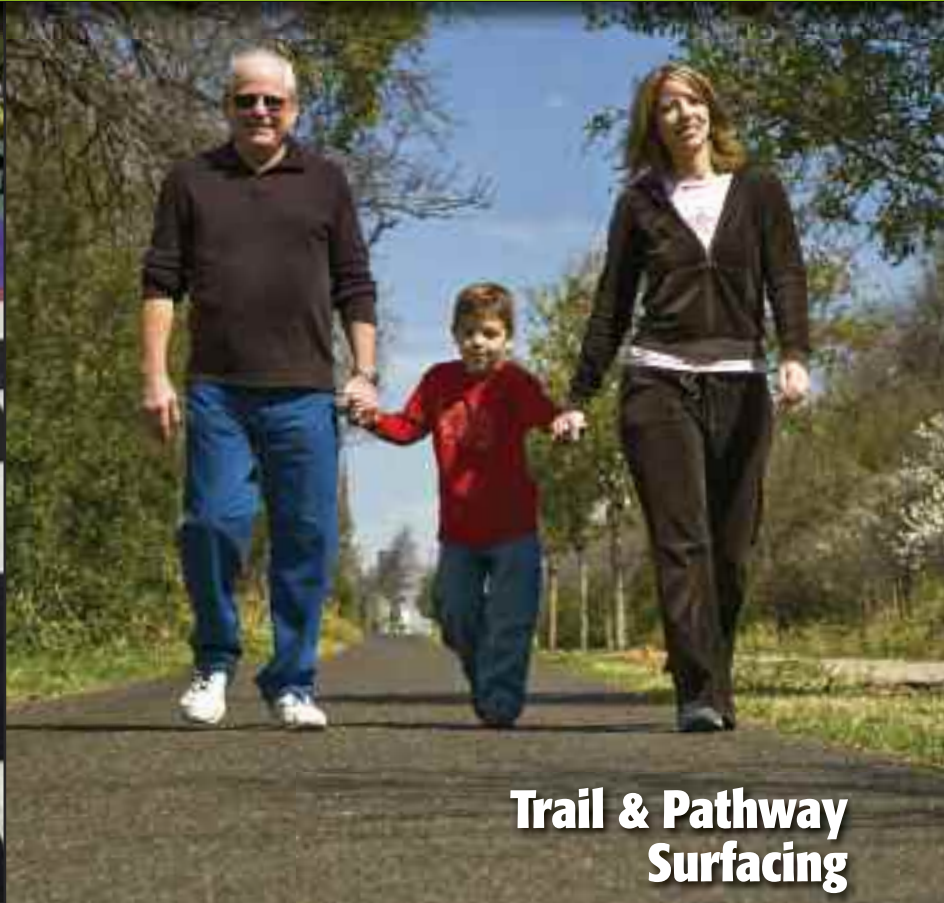
**Playground Surfacing**



**Handicap Accessible  
Baseball Fields**



**High Traffic &  
Play Area Surfacing**



## Trail & Pathway Surfacing

[www.SurfaceAmerica.com](http://www.SurfaceAmerica.com)

Visit our website for greater detail, such as product data, color selections and downloadable specifications.



## Also Ideal for Indoor Applications

### Table of Contents

ECORE Corporate Group .....	Page 4
Recycled Message .....	Page 5
President's Message .....	Page 5
Playground Surfacing .....	Pages 6-13
Other Play Area Surfacing .....	Pages 14-15
Handicap Accessible Baseball Field Surfacing .....	Pages 16-17
Trail & Pathway Surfacing .....	Pages 18-19
Other Outdoor Surfacing .....	Pages 20-21
Indoor Flooring .....	Pages 22-23
Installation Service .....	Page 24
Outstanding Administration & Service .....	Page 25
Synthetic Grass Athletic Fields .....	Pages 26-27



## Rooftop, Terrace & Deck Surfacing

# PART OF THE ECORE GROUP

**Our capabilities are broad, our bonding capacity is great, our financial strength is sure, our warranties are superior and our approach to business is responsible.**

ECORE™ International is a corporate group with more than a one hundred and fifty year history. What began as Dodge Cork Company in the mid 1800s, became Dodge-Regupol in 1989 when it formed an international partnership. The joint venture concluded at the end of 2007. With headquarters in Lancaster, Pennsylvania, ECORE's purpose is to manufacture and market innovative, sustainable products for the global marketplace.



As North America's largest processor and user of scrap tire rubber, ECORE recycles eighty million pounds of rubber each year – helping conserve more than one million barrels of oil – to manufacture components for poured on-site, roll and molded products.



ECORE's products are used as components in the aerospace and automotive industries; for sound and vibration dampening in high-rise construction; as indoor flooring for commercial, retail and recreational applications; and indoor/outdoor sports and recreational surfacing.



Surface America is the leader in the playground surfacing industry. Sister company A-Turf is a leading national synthetic grass field builder.



For more information on ECORE™ International, visit [ecoreintl.com](http://ecoreintl.com)

## The widest collection of recycled materials.



Surface America incorporates the industry's widest collection of recycled materials into its surfacing systems, utilizing both pre-consumer and post-consumer recycled material components. Most of the recycled material is rubber from post-consumer tires.

### Our products are eligible for LEED® credits.



The Leadership in Energy and Environmental Design (LEED®) Green Building Rating System™ represents the U.S. Green Building Council's effort to provide a national standard for what constitutes a "green building."

Surface America and A-Turf products can assist architects and designers in obtaining LEED certification.

## Thank you for investing a few minutes to learn about Surface America.



**Jim Dobmeier**  
Founder & President,  
Surface America & A-Turf

The world of surfacing for play, recreation and sports is full of possibilities. Each surfacing choice has the potential to significantly enhance the facility ... and enjoyment by those who use it.

If you're on a short schedule or are already familiar with the surfacing options for your application, check out the photos and headlines in this user-friendly catalog.

For those who want to know more of the details of Surface America's extensive surfacing choices, combine a thorough review of this catalog with a visit to our detailed and functional website (SurfaceAmerica.com). While there, view our corporate presentation video (on the home page) and learn how we commit to – and achieve – 100% client satisfaction.

Since 1993, our mission has been to combine the best material components with old-fashioned customer service. That mission, after 20 million square feet of surfacing installations, remains steadfast. It's how we've earned the reputation as having the industry's best value.

### We look forward to providing our expertise when working on your next project!

Sincerely,

## Surface America is IPEMA certified.



In the interest of playground safety, the International Play Equipment Manufacturers Association (IPEMA) provides a Third Party Certification service by an independent laboratory. Surface America has received written

validation that its playground surfacing conforms with the requirements of the standard. Check the IPEMA website ([www.ipema.org](http://www.ipema.org)) to confirm product certification, its thickness and critical height.

## Surface America is ADA compliant.



When a Surface America system is installed, wheelchairs and crutches negotiate the playground without difficulty, thus conforming to the requirements of the Americans with Disabilities

Act and ASTM F-1951-99 Determination of Playground Surface Accessibility.

## PlayBound™ Poured-in-Place



*Colorful playground.*



*Finally, a spider I don't mind stepping on!*

### **It's always where you need it, when you need it.**

PlayBound Poured-in-Place is a 2-layer system consisting of a basemat of 100% post-consumer recycled SBR (Styrene Butadiene Rubber) and polyurethane and a top surface consisting of recycled post-industrial EPDM (Ethylene Propylene Diene Monomer) rubber and polyurethane. It's easily customized to meet the safety, design and aesthetic requirements of any playground. Because the rubber and urethane components are mixed and applied on site, having school colors, logos, games and/or geometric shapes permanently incorporated into the surface are practical options. Thicknesses can be modified on site to meet varying critical fall heights within the playground, and colors can be mixed and varied to complement playground equipment and playground settings. PlayBound Poured-in-Place includes an industry-leading percentage of material in its top surface, significantly increasing the surface's expected life.

- Field-applied in any configuration and dimensions
- Typical thickness range is 1-3/4" to 5-1/2"
- Wet poured, two layers, troweled on site
- Many colors and color combinations
- Porous
- Primarily outdoor use (indoor use less typical)
- Meets 4' to 12' critical fall heights per ASTM F-1292-04
- IPEMA certified
- Eligible for LEED® credits and state grants

# PlayBound™ Poured-in-Place



1996 - Centennial Olympic Park.



Basemat application.



Top surface application.

More material in the top surface layer means superior tensile strength (side-to-side pulling) and superior taber abrasion (top down wear).



**Surface America**

**Actual Size:** Surface America's top surface specification calls for an industry-leading 2.44 lbs. of material per square foot, yielding a dense, tight 1/2" nominal thickness.



**Competitors**

**Actual Size:** Competitors use 10-40% less material in their top surfaces, resulting in a less-dense, thinner top surface and a shortened life expectancy.

# PLAYGROUND SURFACING

## PlayBound™ Poured-in-Place



*"Patriotic" play.*



*Impressive landscape design.*



*Geography theme.*



*Fun colors and circles.*

PlayBound Poured-in-Place is a seamless and stationary surface, so wheelchairs, motorized scooters and strollers can easily make their way around the playground. And the critical areas below swings and slides are always ready to absorb the impact.

# PlayBound™ Poured-in-Place



*Follow the  
Yellow Brick Road.*



*Before: More dirt than grass.*



*After: A beautiful & resilient surface.*



*Ready for playtime!*

# PLAYGROUND SURFACING

## PlayBound™ Poured-in-Place



*Matching the surface to the setting.*



*Featuring the Lone Star State.*



*Wavy design on a rolling playground.*



*Curvilinear layout adjoins sand.*



*Green grass year-round.*



*Very resistant to wear.*

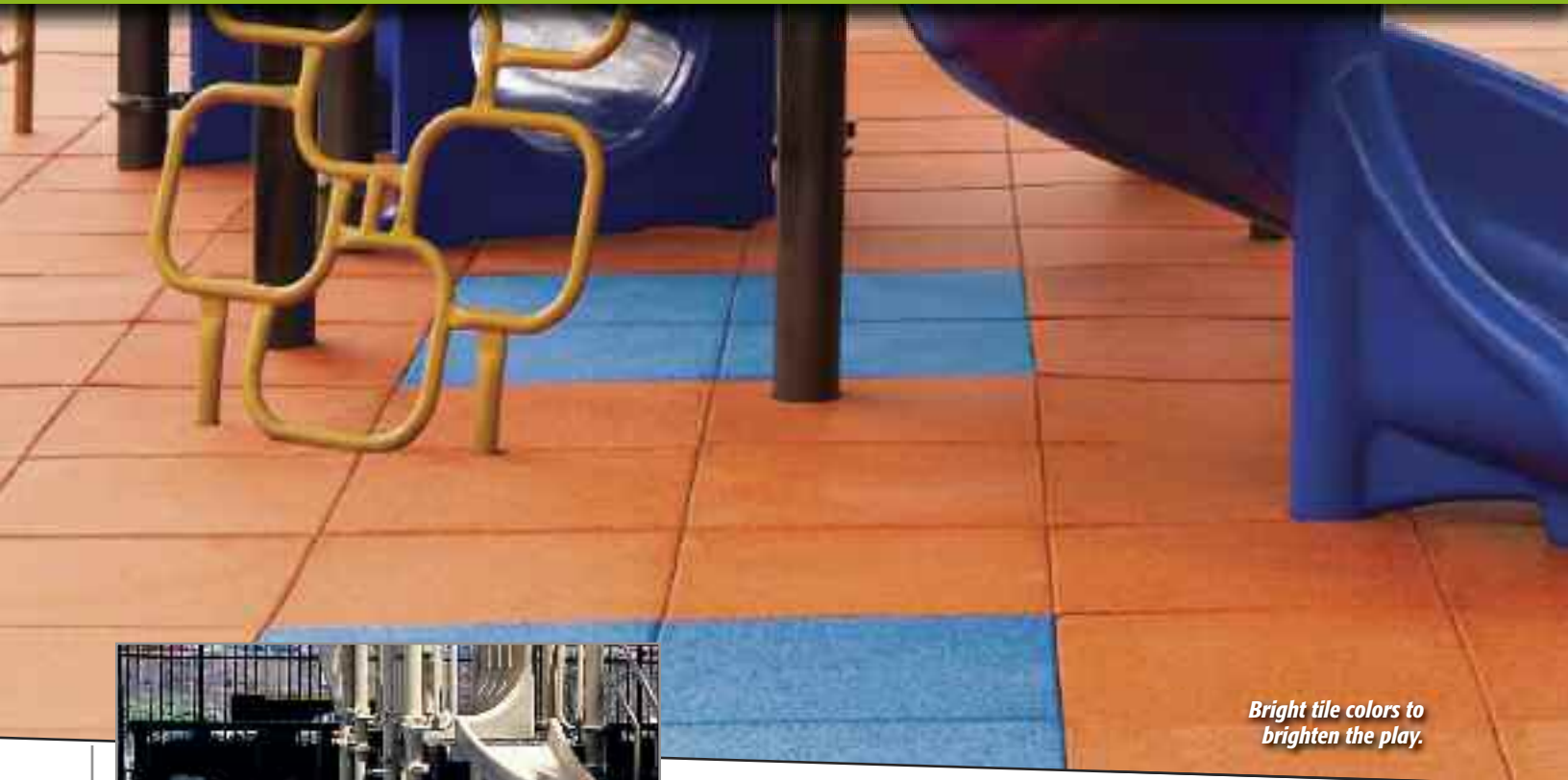


*Cross-section view of turf with (optional) rubber infill.*

## **Resists wear and tear from foot traffic and the elements.**

PlayBound TurfTop (with or without infill) allows a free flow of water, enabling the playground to be used immediately following heavy rain. The poured basemat is 100% post-consumer recycled SBR (Styrene Butadiene Rubber) and polyurethane. The synthetic turf is a polyethylene fiber tufted into a backing with perforations. Infill is clean and processed rubber from 100% post-consumer recycled SBR (Styrene Butadiene Rubber).

- Poured basemat, synthetic turf, with or without rubber granule infill
- Partially or fully adhered
- 12' or 15' wide turf roll by custom lengths
- Green turf, black infill (optional)
- Porous
- Primarily outdoor use (indoor less typical)
- Meets 6' to 8' critical fall heights per ASTM F-1292-04
- Eligible for LEED® credits and state grants



*Bright tile colors to brighten the play.*



*Always in place and ready to absorb shock from falls.*



*Tile profile.*

### The world's toughest wear layer.

UltraTile features a proprietary manufacturing process. The 3 mm patented, pre-manufactured top wear layer is significantly higher in density than other tiles. It is bonded to the resilient underlayment made of 100% post-consumer recycled SBR (Styrene Butadiene Rubber) and polyurethane. The result is unmatched durability, and its expected life is more than 100% longer than other playground tiles.

- 24" x 24"
- 2-1/2", 4-1/4" thicknesses
- Accessory pieces and ADA edges available
- Many standard colors (color combinations and designs available)
- Fully-adhered plus side-to-side bonding, or side-to-side bonding only
- Porous
- Indoor and outdoor use
- Meets 6' to 8' critical fall heights per ASTM F-1292-04
- IPEMA certified
- Eligible for LEED® credits and state grants



*New York City  
rooftop ingenuity.*



*Staggered tile installation.*



*Green is a standard tile color.*

## Not all playground tiles are alike.

PlayBound Tile features a unique dual-density construction. Bottom design and solid sides allow maximum adhesive contact between the tile bottom and base as well as between adjacent tiles. Gapping is eliminated and the installation is much more secure. Tiles are 100% post-consumer recycled SBR (Styrene Butadiene Rubber) and pigmented polyurethane.

- 39-1/4" x 19-5/8" (1 m x 1/2 m)
- 1-3/4", 2-3/8", 3-3/8", 4" thicknesses
- Accessory pieces and ADA edges available
- 4 standard solid colors
- Fully-adhered plus side-to-side bonding, or side-to-side bonding only
- Porous
- Indoor and outdoor use
- Meets 4' to 10' critical fall heights per ASTM F-1292-04
- IPEMA certified
- Eligible for LEED® credits and state grants



# OTHER OUTDOOR SURFACING

EverTop™



*What a day!*



*Tropical waves.*



*Sprucing up a hospital setting.*

EverTop is mixed & poured on site. It's great for water play areas because the rubber and urethane components resist the wear and tear of water and pool chemicals. The porous system is ideal for outside high traffic areas. It's available in many colors and applied in endless custom designs.



*Remembering a loved one.*



*Great footing around pools.*



*Miniature-sized baseball field for wiffle ball at NY Mets Citi Field.*



*Custom designs make play more fun.*

- Field-applied in any design, configuration and dimensions
- Typical thickness is 1/2"
- Base options include asphalt or concrete
- Wet poured, troweled on site
- One-layer system: EPDM rubber & urethane binder (aliphatic binder in water play areas)
- Porous
- Typically used outdoors
- Many standard colors
- Custom designs available – logos, shapes, games, etc
- Made from pre- and post-industrial recycled materials
- Eligible for LEED® credits and state grants
- Industry's longest & most comprehensive warranty

IMPORTANT NOTE FOR WATER APPLICATIONS: Please review Surface America's specifications regarding "harsh" water and potential effects of contents of hydro-chlorides in the water on the appearance of the surface.

# SURFACE AMERICA IS THE MIRACLE LEAGUE'S EXCLUSIVE PARTNER FOR POURED-IN-PLACE BASEBALL FIELDS

## EverTop™ for Baseball

*All white field markings are inlaid into surface - no painting!*



*Swinging for the fence!*

Our poured **EverTop** is used for both infield and outfield because it provides a smooth, seamless surface for players and mobility equipment to maneuver.

### Every child deserves a chance to play baseball.

In 1997, a youth baseball association coach invited a 7-year-old child in a wheelchair to play baseball on his team. In 1998, that group formed The Miracle League to further the mission of providing opportunities for all children to play baseball regardless of ability. Today, there are hundreds of Miracle League fields and organizations across America and Puerto Rico. Learn more at [www.miracleleague.com](http://www.miracleleague.com)



*"If you were told about an organized youth baseball league, you might call it ordinary.  
If you were told the athletes are physically and mentally challenged, you might call it touching.  
If you were to see them play, you would call it a miracle."*



*Now this is a field  
of dreams!*



*Infield's ready for action.*



*Applying the seamless rubber "turf."*



*A great day for baseball.*



*Smooth ride & resilient surface.*



*The long and winding trail.*



*Sure beats asphalt.*

### **Ideal traction and shock absorption for joggers, walkers and riders.**

ECOtrail is a blend of post-consumer and post-industrial recycled rubber granules and polyurethane binder. Surface includes up to 2 pounds of recycled rubber per square foot of trail. It's virtually maintenance-free and won't puddle like asphalt. Provides exceptional footing with no loose material.

- Field-applied in any configuration and dimensions
- Applied over asphalt or concrete
- Typical thickness is nominal 1/2"
- Wet poured, single layer, troweled on site
- Outstanding selection of standard colors and color combinations
- Porous
- Indoor and outdoor use



Obtain LEED® credits by using Surface America's ECOtrail™



*Troweled to specification.*



*No need to mark this trail.*

**Up to 2 pounds of recycled rubber per square foot of trail.**

That's what makes this surfacing solution so attractive to municipalities and others trying to find ways to be eligible for state grants that encourage green efforts.



*We've arrived.*



*Is it a trail, or is it a river?*

# OTHER OUTDOOR SURFACING

## Products for Rooftops, Decks & Walkways



*Rooftop installation above the city.*



*I-shaped **DuraPaver™** adds an attractive design to a walkway or common area.*



***DuraTile™** is a perfect combination of comfort and resilience.*



*The **TuffRoll™** proprietary process yields the industry's best roll good: perfect uniformity in density and thickness from roll to roll.*



*The natural look for play areas - durable and maintenance-free!*



*TurfTop makes roofs more usable.*



*Never needs mowing, watering or fertilizing.*



*Perforated backing for drainage.*

## Poured, Roll & Tile Products



*EverTop™ can be poured into any configuration.*



*TuffRoll™ is perfect for fitness flooring because it can take the pounding of dumbbells and the weight of every type of fitness machine.*

With several products and systems from which to choose, and the option of applying multiple game markings and custom inlaid graphics, we can work with you to design the best solution for your indoor flooring application.

Surface America features the industry's longest and most comprehensive warranty. All of our products are eligible for LEED® credits.



*EverTop™ maintains good footing around pools.*



*Logos and graphics can be inlaid into an EverTop™ surface.*



*ElastoFloor™ poured urethane over pad – gymnasium floor.*



*TuffRoll™ isn't affected by moisture or extreme temperatures; and resists the punishing wear of ice skates and ski boots.*



*AmeriTile™ Indoor Sport is a snap-together tile product over a rubber basemat. It's an economical solution for gymnasium floors.*



*DuraTile™ is a perfect combination of comfort and resilience.*

# COAST-TO-COAST INSTALLATION



*Installation is an art and a science.*



*Inlaying hopscotch graphics.*

## **We don't just talk about quality ... we build it!**

Installing recreational and athletic surfacing is very much a construction process. Surface America has developed training and certification programs, ensuring superior craftsmanship is delivered by our national network of installation crews.



*Ensuring tight seams.*



*Precision cuts.*

## Outstanding Administration & Service



*Commitment to  
100% client satisfaction.*

### 10-step process.

1. Determine the application.
2. Identify appropriate Surface America systems.
3. Review the recommendations and unique characteristics of the system, and address concerns.
4. Calculate the size of area.
5. Give some thought to who will install the surface – Surface America or others.
6. Contact Surface America for a “no obligation” price quote.
7. Place the order including all necessary detail to ensure the system meets your requirements and schedule.
8. Plan ahead so materials and installation crews are available.
9. Materials and installation crews (when applicable) arrive at the project site.
10. Enjoy the benefits of a surface engineered to meet the needs of your application.

### Comments from some clients and independent agents:

“Surface America stands behind its products. It’s really, at the end of the day, one of the biggest things that you need from your surfacing company.”

“Surface America is always good at making the timetable work, or reconfiguring a schedule, so that they’re able to come and work within the time frame we need them to.”

“Surface America provides a lot of assistance and they have great customer service.”

“Surface America really stands behind their product.”

“We have to have a company that has a great understanding of the importance of attention to detail, and a company that stands behind its product. Surface America does that.”

“Surface America is able to live up to our quality and our standards because of their ability to listen and be responsive to our concerns. Surface America definitely understands the surfacing industry.”

“I measure Surface America’s passion by its ability to follow through, handle issues and its commitment to stand behind its products and work.”



*NCAA Division I football at Southern Methodist University – Dallas, TX.*



*Inlaid turf in multiple colors for detailed logo.*

### **Consistent playability and superior durability.**

Regardless of the sport, the climate, or the level of play, **A-Turf** synthetic grass surfacing systems provide consistent playability and superior durability. Featuring dense fiber construction and ideal infill volume, resulting in the perfect balance of traction and foot release. All A-Turf systems are eligible for LEED® credits and state grants.





*Five-field, 435,000 sq.ft. athletics campus at JSerra High School – San Juan Capistrano, CA.*



*Game markings for multiple sports.*

## **Anytime. Anywhere.**

Texas heat to Minnesota cold, Pennsylvania snow to California desert, collegiate competition to physical education programs, football collisions to field hockey ball roll, soccer footing to baseball bounces, investment-minded administrators to performance driven athletes, proven systems to cutting-edge technology.



*Baseball & football fields at St. Joseph's Collegiate Institute – Buffalo, NY*



*Multi-field complex at Grand Haven High School.*



# **SURFACE**AMERICA®

*Resilient Surfacing from Recycled Materials*

PO Box 157, Williamsville, NY 14231  
Phone: 716-632-8413 • Fax: 716-632-8324  
Email: [surface@surfaceamerica.com](mailto:surface@surfaceamerica.com)

800-999-0555 • [www.SurfaceAmerica.com](http://www.SurfaceAmerica.com)

## SISTER COMPANY



*Athletic Surfacing... Synthetic Technology*

888-777-6910 • [www.aturf.com](http://www.aturf.com)



*Six-field, 531,990 sq. ft. complex for nationally renowned Jack Cust Baseball Academy & Jennie Finch Softball Academy at Diamond Nation – Flemington, NJ.*



Surface America & A-Turf products feature materials sourced from the United States.



Surface America incorporates the industry's widest collection of recycled materials into its surfacing systems.

©2009, Surface America Inc.  
Printed in USA • SPTM-15M-0909